

FLOOR PLAN - GARAGE & FIRST LEVEL

3/32" = 1' - 0"

SQUARE FOOTAGE

H.V.A.C. FIRST LEVEL = 2806 SQ. FT.
 H.V.A.C. SECOND LEVEL = 725 SQ. FT.
 COVERED ENTRY / PORCH = 529 SQ. FT.
 GARAGE = 543 SQ. FT.

TOTAL H.V.A.C. = 3531 SQ. FT.

US ONE ENTERPRISES INC.

LOT 8 BLOCK 5
 AMENDED AND REVISED PLOT OF SHARK KEY
 MONROE COUNTY, FL.

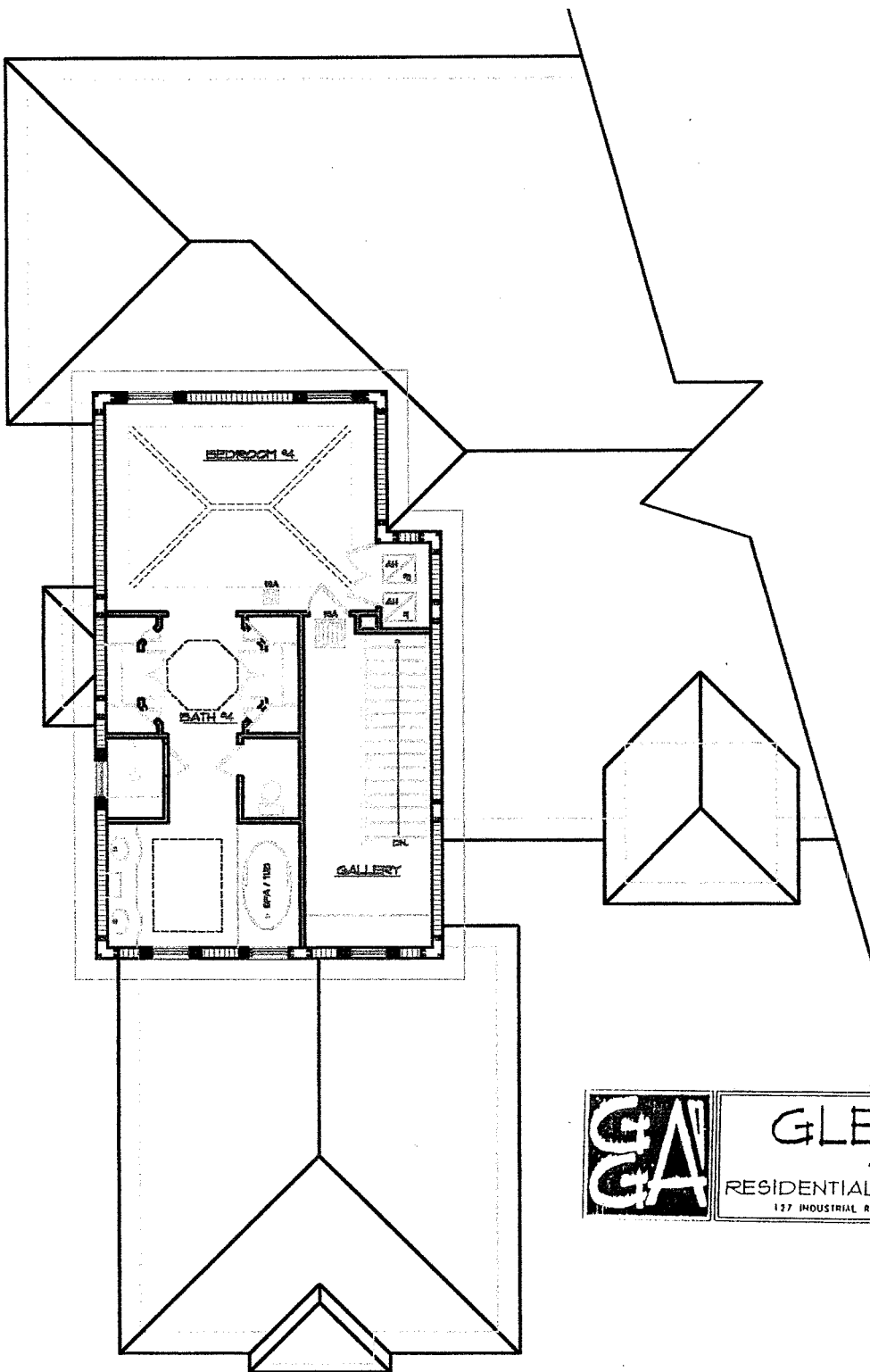


GLENN GRAY

4 Associates

RESIDENTIAL DEVELOPMENT BY DESIGN

127 INDUSTRIAL RD., BIG PINE KEY, FLORIDA, 33043 (305) 672-3241



GLENN GRAY
 & Associates
 RESIDENTIAL DEVELOPMENT BY DESIGN
 127 INDUSTRIAL RD., BIG PINE KEY, FLORIDA, 33043 (305) 872-3241

FLOOR PLAN - SECOND LEVEL

3/32" = 1' - 0"

SQUARE FOOTAGE	
H.V.A.C. FIRST LEVEL	= 2806 SQ. FT.
H.V.A.C. SECOND LEVEL	= 725 SQ. FT.
COVERED ENTRY / PORCH	= 529 SQ. FT.
GARAGE	= 543 SQ. FT.
TOTAL H.V.A.C.	= 3531 SQ. FT.

US ONE ENTERPRISES INC.

**LOT 8 BLOCK 5
 AMENDED AND REVISED PLOT OF SHARK KEY
 MONROE COUNTY, FL.**